

Flange Connector

F O 12. 4 - 0 / M16/ F

Product Category

F: Flange connector

Gender

Null: Male
O: Female

Size

12: M12*1
8: M8*1
7:7/8" M20*1.5

No. of Pin

4: 4-pin
5: 5-pin
8: 8-pin
12: 12-pin

Mounting

Null: Rear panel mounting
F: Front panel mounting

Screw Connection

M16: M16×1.5
M8: M8×0.5
M11: M11×1
M20: M20×1.5

Connection Type

0: Reserved soldering cover
P: PCB welding pin
0.5: Cable length (unit: m)

Flange socket connector - M12 female (F)

Description:

Used for fixed I/O connecting such as panel and cabinet. Standard M12(female) threaded connection. 4, 5, 8-core are optional.

Features:

- Optional front/rear panel installation
- Customized cable lengths



Technical Data

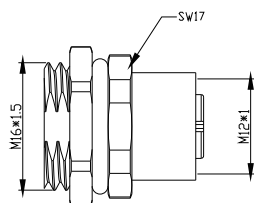
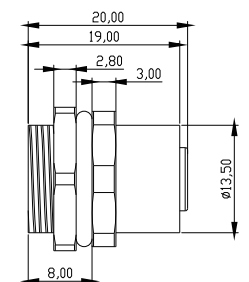
Cable jacket	Description	Type	Pin	Rated current/voltage	Dia. of cable
Brass zinc nickel plating	Female 4-core rear panel installation	FO12.4-0/M16	4	4A/250V	0.25-1mm ²
	Female 4-core front panel installation	FO12.4-0/M16/F	4	4A/250V	0.25-1mm ²
	Female 5-core rear panel installation	FO12.5-0/M16	5	4A/60V	0.25-0.75mm ²
	Female 5-core front panel installation	FO12.5-0/M16/F	5	4A/60V	0.25-0.75mm ²
	Female 8-core rear panel installation	FO12.8-0/M16	8	2A/30V	Max.0.25mm ²
	Female 8-core front panel installation	FO12.8-0/M16/F	8	2A/30V	Max.0.25mm ²

Selection Instructions

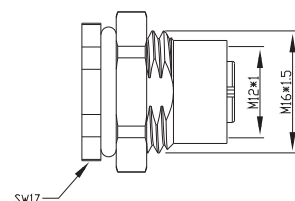
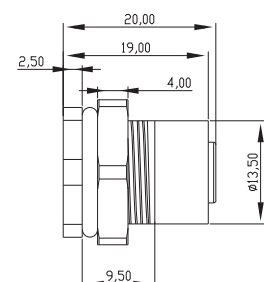
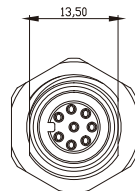
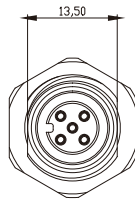
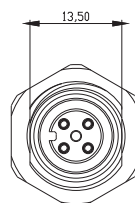
FO12.4 - 0/M16

Attn: Standard

Dimensions



Front panel installation



Rear panel installation

Flange socket connector - M12 male (M)

Description:

Used for fixed I/O connecting such as panel and cabinet. Standard M12(male) threaded connection. 4, 5, 8-core are optional.

Features:

- Optional front/rear panel installation
- Customized cable lengths



Technical Data

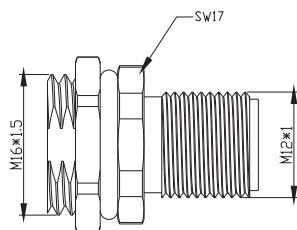
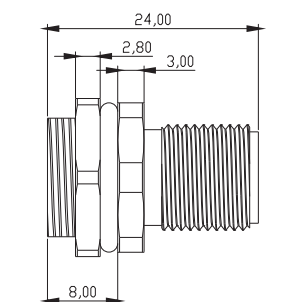
Cable jacket	Description	Type	Pin	Rated current/voltage	Dia. of cable
Brass zinc nickel plating	Male 4-core rear panel installation	F12.4-0/M16	4	4A/250V	0.25-1mm ²
	Male 4-core front panel installation	F12.4-0/M16/F	4	4A/250V	0.25-1mm ²
	Male 5-core rear panel installation	F12.5-0/M16	5	4A/60V	0.25-0.75mm ²
	Male 5-core front panel installation	F12.5-0/M16/F	5	4A/60V	0.25-0.75mm ²
	Male 8-core rear panel installation	F12.8-0/M16	8	2A/30V	Max.0.25mm ²
	Male 8-core front panel installation	F12.8-0/M16/F	8	2A/30V	Max.0.25mm ²

Selection Instructions

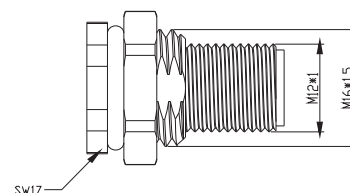
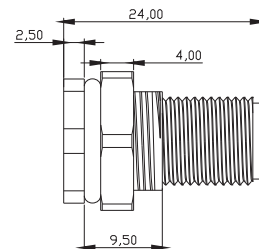
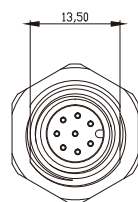
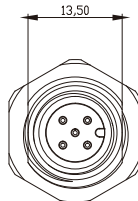
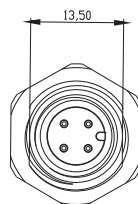
F12.4 - 0/M16

Attn: Standard

Dimensions



Front panel installation



Rear panel installation

Flange socket connector - M8 female (F)

Description:

Used for fixed I/O connecting such as panel and cabinet. Standard M8(female) threaded connection. 3, 4-core are optional.

Features:

- Optional front/rear panel installation
- Customized cable lengths



Technical Data

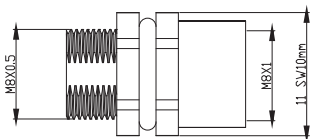
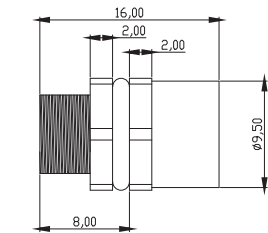
Cable jacket	Description	Type	Pin	Rated current/voltage	Dia. of cable
Brass zine nickel plating	Female 3-core front panel installation	FO8.3-0/M8/F	3	3A/30V	0.25mm ²
	Female 3-core rear panel installation	FO8.3-0/M11	3	3A/30V	0.25mm ²
	Female 4-core front panel installation	FO8.4-0/M8/F	4	3A/30V	0.25mm ²
	Female 4-core rear panel installation	FO8.4-0/M11	4	3A/30V	0.25mm ²

Order Code

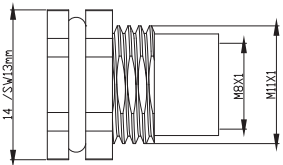
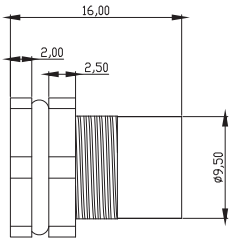
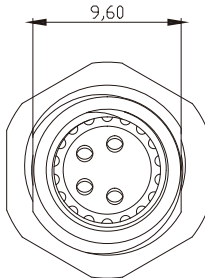
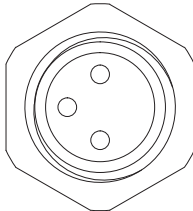
FO8.3-0/M8/F

Attn: Standard

Dimensions



Front panel installation



Rear panel installation

Flange socket connector - M8 male (M)

Description:

Used for fixed I/O connecting such as panel and cabinet. Standard M8(male) threaded connection. 3, 4-core are optional.

Features:

- Optional front/rear panel installation
- Customized cable lengths



Technical Data

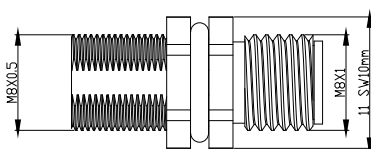
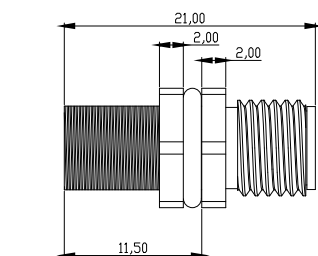
Cable jacket	Description	Type	Pin	Rated current/voltage	Dia. of cable
Brass zine nickel plating	Male 3-core rear panel installation	F8.3-0/M8	3	3A/30V	0.25mm ²
	Male 3-core front panel installation	F8.3-0/M8/F	3	3A/30V	0.25mm ²
	Male 4-core rear panel installation	F8.4-0/M8	4	3A/30V	0.25mm ²
	Male 4-core front panel installation	F8.4-0/M8/F	4	3A/30V	0.25mm ²

Order Code

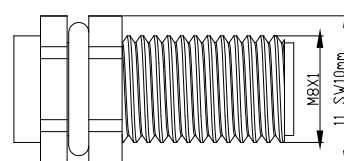
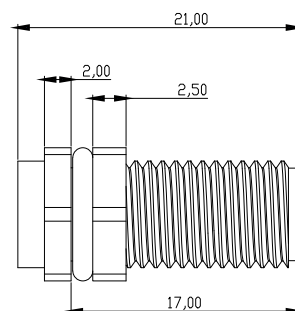
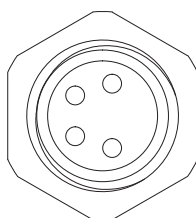
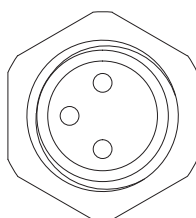
F8.3-0/M8

Attn: Standard

Dimensions



Front panel installation



Rear panel installation

Flange socket connector - 7/8" female (F)

Description:

Used for fixed I/O connecting such as panel and cabinet. Standard 7/8"(female) threaded connection. 3, 4, 5-core are optional.

Features:

- Optional front panel installation
- Customized cable lengths



Technical Data

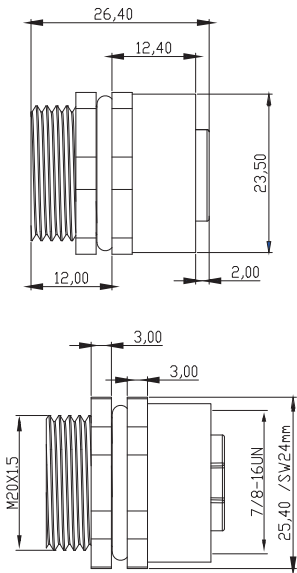
Cable jacket	Description	Type	Pin	Rated current / voltage	Dia. of cable
Brass zine nickel plating	Female 3-core front panel installation	FO7.3-0/M20/F	3	8A/600V	Max1.5mm ²
	Female 4-core front panel installation	FO7.4-0/M20/F	4	8A/600V	Max1.5mm ²
	Female 5-core front panel installation	FO7.5-0/M20/F	5	8A/600V	Max1.5mm ²

Order Code

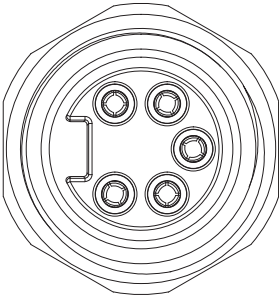
FO7.3-0/M16/F

Attn: Standard

Dimensions



Front panel installation



Flange socket connector - 7/8" Male (M)

Description:

Used for fixed I/O connecting such as panel and cabinet. Standard 7/8"(male) threaded connection. 3, 4, 5-core are optional.

Features:

- Optional front panel installation
- Customized cable lengths



Technical Data

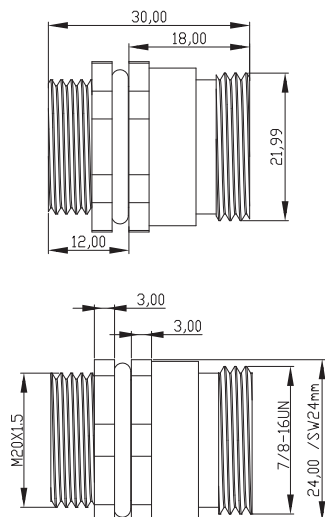
Cable jacket	Description	Type	Pin	Rated current / voltage	Dia. of cable
Brass zine nickel plating	Male 3-core front panel installation	F7.3-0/M20/F	3	8A/600V	Max1.5mm ²
	Male 4-core front panel installation	F7.4-0/M20/F	4	8A/600V	Max1.5mm ²
	Male 5-core front panel installation	F7.5-0/M20/F	5	8A/600V	Max1.5mm ²

Order Code

F7.4-0/M16/F

Attn: Standard

Dimensions



Front panel installation

